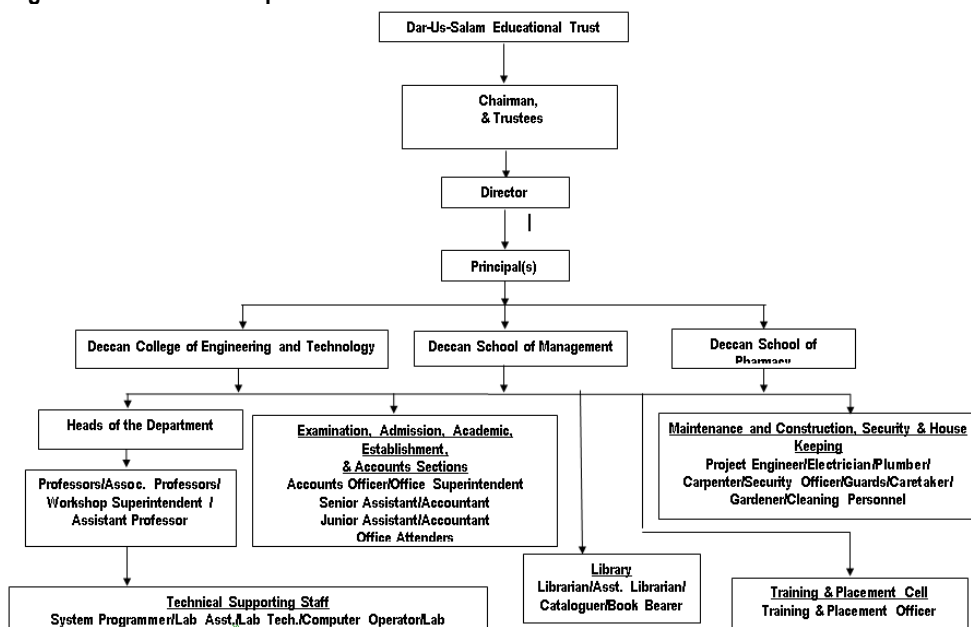


**MANDATORY DISCLOSURE**  
Updated on: February 28, 2026

<b>AICTE File No</b>	F.No. South-Central/1-44638283141/2025/EOA, Date: 20-March-2025																					
<b>Date/Period of last approval</b>	Date: 20-March-2025/ 01 Year (2025-2026)																					
<b>1</b>	<b>Name of the institution</b>	<b>DECCAN GROUP OF INSTITUTIONS</b> (A Self Financed Muslim Minority Technical Campus, Estd. by Dar-us-Salam Educational Trust) (Affiliated to Osmania University, Hyderabad & Approved by AICTE, New Delhi) Darussalam, Aghapura, Hyderabad – 500 001 Telangana, India Mobile: 9704731117 Email: <a href="mailto:dcet@deccancollege.ac.in">dcet@deccancollege.ac.in</a> URL: <a href="http://dgi.org.in/">http://dgi.org.in/</a>																				
<b>2</b>	<b>Name and address of the Trust</b>	<b>The Dar-Us-Salam Educational Trust</b> Darussalam, Aghapura, Hyderabad – 500 001 Telangana, India Mobile: 9704731117 Email: <a href="mailto:dcet@deccancollege.ac.in">dcet@deccancollege.ac.in</a> URL: <a href="http://dgi.org.in/">http://dgi.org.in/</a>																				
<b>3</b>	<b>Name and Address of the Principal/ Director</b>	<b>Prof. MIR IQBAL FAHEEM, Ph.D</b> Director DECCAN GROUP OF INSTITUTIONS (A Self Financed Muslim Minority Technical Campus, Estd. by Dar-us-Salam Educational Trust) (Affiliated to Osmania University, Hyderabad & Approved by AICTE, New Delhi) Darussalam, Aghapura, Hyderabad – 500 001 Telangana, India Mobile: 9704731117 Email: <a href="mailto:dcet@deccancollege.ac.in">dcet@deccancollege.ac.in</a> URL: <a href="http://dgi.org.in/">http://dgi.org.in/</a>																				
<b>4</b>	<b>Name of the affiliating University</b>	<b>OSMANIA UNIVERSITY</b> , Hyderabad - 500007, Telangana																				
<b>5</b>	<b>Governance</b>	<b>Members of the Board and their brief background</b>																				
		<table border="1"> <thead> <tr> <th>Name</th> <th>Designation</th> <th>Background</th> </tr> </thead> <tbody> <tr> <td>Barrister Asaduddin Owaisi</td> <td>Chairman</td> <td>Member of Parliament Hyderabad Lok Sabha</td> </tr> <tr> <td>Mr. SAP Quadri</td> <td>Secretary</td> <td>Ex-Member of Legislative Assembly, Telangana</td> </tr> <tr> <td>Mr. Syed Akber Nizamuddin Hussaini</td> <td>Trustee</td> <td>Chancellor, Jamia Nizamia Islamic University, Hyderabad</td> </tr> <tr> <td>Mr. Akbaruddin Owaisi</td> <td>Trustee</td> <td>Member of Legislative Assembly, Telangana</td> </tr> </tbody> </table>	Name	Designation	Background	Barrister Asaduddin Owaisi	Chairman	Member of Parliament Hyderabad Lok Sabha	Mr. SAP Quadri	Secretary	Ex-Member of Legislative Assembly, Telangana	Mr. Syed Akber Nizamuddin Hussaini	Trustee	Chancellor, Jamia Nizamia Islamic University, Hyderabad	Mr. Akbaruddin Owaisi	Trustee	Member of Legislative Assembly, Telangana					
		Name	Designation	Background																		
		Barrister Asaduddin Owaisi	Chairman	Member of Parliament Hyderabad Lok Sabha																		
		Mr. SAP Quadri	Secretary	Ex-Member of Legislative Assembly, Telangana																		
		Mr. Syed Akber Nizamuddin Hussaini	Trustee	Chancellor, Jamia Nizamia Islamic University, Hyderabad																		
		Mr. Akbaruddin Owaisi	Trustee	Member of Legislative Assembly, Telangana																		
		<b>Members of Academic Advisory Body</b>																				
		<table border="1"> <thead> <tr> <th>Name</th> <th>Designation</th> </tr> </thead> <tbody> <tr> <td>Barrister Asaduddin Owaisi</td> <td>Chairman, Darussalam Educational Trust, Hyderabad</td> </tr> <tr> <td>Mr. SAP Quadri</td> <td>Secretary, Darussalam Educational Trust, Hyderabad</td> </tr> <tr> <td>Mr. Syed Akber Nizamuddin Hussaini</td> <td>Trustee, Darussalam Educational Trust, Hyderabad</td> </tr> <tr> <td>Mr. Akbaruddin Owaisi</td> <td>Trustee, Darussalam Educational Trust, Hyderabad</td> </tr> <tr> <td>Prof. Mir Iqbal Faheem</td> <td>Member Director, Deccan Group of Institutions, Hyderabad</td> </tr> <tr> <td>Prof. P. Vishvapathi</td> <td>Member, Principal, Deccan College of Engg. and Tech., Hyderabad</td> </tr> <tr> <td>Prof. Iffath Rizwana</td> <td>Member, Principal, Deccan School of Pharmacy, Hyderabad</td> </tr> <tr> <td>Prof. Raza Shah</td> <td>Member, Principal, Deccan School of Management, Hyderabad</td> </tr> <tr> <td>Prof. Manisha Saxena</td> <td>Member, Principal, Deccan School of Management, Hyderabad</td> </tr> </tbody> </table>	Name	Designation	Barrister Asaduddin Owaisi	Chairman, Darussalam Educational Trust, Hyderabad	Mr. SAP Quadri	Secretary, Darussalam Educational Trust, Hyderabad	Mr. Syed Akber Nizamuddin Hussaini	Trustee, Darussalam Educational Trust, Hyderabad	Mr. Akbaruddin Owaisi	Trustee, Darussalam Educational Trust, Hyderabad	Prof. Mir Iqbal Faheem	Member Director, Deccan Group of Institutions, Hyderabad	Prof. P. Vishvapathi	Member, Principal, Deccan College of Engg. and Tech., Hyderabad	Prof. Iffath Rizwana	Member, Principal, Deccan School of Pharmacy, Hyderabad	Prof. Raza Shah	Member, Principal, Deccan School of Management, Hyderabad	Prof. Manisha Saxena	Member, Principal, Deccan School of Management, Hyderabad
		Name	Designation																			
		Barrister Asaduddin Owaisi	Chairman, Darussalam Educational Trust, Hyderabad																			
		Mr. SAP Quadri	Secretary, Darussalam Educational Trust, Hyderabad																			
		Mr. Syed Akber Nizamuddin Hussaini	Trustee, Darussalam Educational Trust, Hyderabad																			
Mr. Akbaruddin Owaisi	Trustee, Darussalam Educational Trust, Hyderabad																					
Prof. Mir Iqbal Faheem	Member Director, Deccan Group of Institutions, Hyderabad																					
Prof. P. Vishvapathi	Member, Principal, Deccan College of Engg. and Tech., Hyderabad																					
Prof. Iffath Rizwana	Member, Principal, Deccan School of Pharmacy, Hyderabad																					
Prof. Raza Shah	Member, Principal, Deccan School of Management, Hyderabad																					
Prof. Manisha Saxena	Member, Principal, Deccan School of Management, Hyderabad																					
<b>Frequency of the Board Meeting and Academic Advisory Body: Twice in a year</b>																						

## Organizational chart and processes



## Nature and Extent of involvement of Faculty and students in academic affairs/ improvements

Available in the respective Departments/Programmes on the following websites

URL: <http://deccancollege.ac.in/>

URL: <http://www.deccan.ac.in/>

## Mechanism/ Norms and Procedure for democratic/ good Governance

Available in the respective Departments/Programmes on the following websites

URL: <http://deccancollege.ac.in/>

URL: <http://www.deccan.ac.in/>

## Student Feedback on Institutional Governance/ Faculty performance

Available in the respective Departments/Programmes on the following websites

URL: <http://deccancollege.ac.in/>

URL: <http://www.deccan.ac.in/>

## Grievance Redressal mechanism for Faculty, staff and students

URL: <http://www.dgi.org.in/Grievance%20Redressal%20Mechanism.html>

## Establishment of Anti Ragging Committee

URL: <http://www.dgi.org.in/Anti-Ragging-Committee.html>

## Establishment of Online Grievance Redressal Mechanism

URL: <https://www.aicte-india.org/feedback/index.php>

## Establishment of Internal Complaint Committee (ICC)

Available in the respective Departments/Programmes on the following websites

URL: <http://deccancollege.ac.in/>

URL: <http://www.deccan.ac.in/>

## Establishment of Committee for SC/ ST URL: <http://www.dgi.org.in/Committee%20for%20SC%20ST.html>

## Internal Quality Assurance Cell

Available in the respective Departments/Programmes on the following websites

URL: <http://deccancollege.ac.in/>

URL: <http://www.deccan.ac.in/>

**Name of Programmes approved by AICTE**

Programme/Course	Approved Intake (2025-2026)
<b>UG –Engineering</b>	
B.E. Civil Engineering	60
B.E. Mechanical Engineering	60
B.E. ECE	30
B.E. CSE	300
B.E. IT	60
B.E. EEE	30
B.E. CME	60
B.E. ETE	30
<b>PG –Engineering</b>	
M.E. Structural Engineering	18
M.Tech CSE	18
PG-MCA	60
PG –MBA	240
PG – MBA(HM)	60

**NBA Accreditation Status**

1.	Programme / Course Accredited	Eligible – Application under process
----	-------------------------------	--------------------------------------

**NAAC Accreditation Status**

1.	Accredited	Eligible – Application under process
----	------------	--------------------------------------

**For each Programme the following details are to be given:**

Programme / Course	No. of Seats	Duration	Cut off rank (last -3Y)			Fee 2025-2026	Campus placement (last-3Y with max / min salary in Lakhs)
			2025-2026	2024-2025	2023-2024		
B.E. Civil Engg.	60	4 years	135114	180071	3001138	Rs.76,000	12 (3,75,1,8)
B.E. Mechanical	60	4 years	132638	300254	3001144	Rs.76,000	14 (3,7,2,2)
B.E. ECE	30	4 years	133439	300155	121135	Rs.76,000	21 (3,8,2,1)
B.E. CSE	300	4 years	112056	117587	66809	Rs.76,000	43 (4,7,2,2)
B.E. IT	60	4 years	131165	153185	81866	Rs.76,000	17 (3,6,2,2)
B.E. EEE	30	4 years	126823	300290	300091	Rs.76,000	15 (3,4,2,0)
B.E. CME	60	4 years	133740	300321	-	Rs.76,000	---
B.E. ETE	30	4 years	400225	173497	-	Rs.76,000	---
<b>PG –Engineering</b>							
M.E. Structural	18	2 years	1372	1693	2092	Rs.1,10,000	11(4.8,3.2)
M.Tech CSE	18	2 years	1453	1017	1048	Rs.1,10,000	17(5.0,3.8)
PG-MCA	60	2 years	21394	21733	21786	Rs. 45,000	27 (4,2,2,0)
PG –MBA	240	2 years	16312	18280	21160	Rs. 50,000	53(5, 3)
PG –MBA(HM)	60	2 years	81	106	72	Rs. 60,000	137(6,2)

6 Programmes

7	Faculty	<table border="1"> <thead> <tr> <th>Programme/Course</th> <th>Web link</th> </tr> </thead> <tbody> <tr> <td colspan="2"><b>UG/PG –Engineering</b></td> </tr> <tr> <td>Civil Engineering</td> <td><a href="https://deccancollege.ac.in/civil-engineering/">https://deccancollege.ac.in/civil-engineering/</a></td> </tr> <tr> <td>Mech. Engineering</td> <td><a href="https://deccancollege.ac.in/mechanical-engineering">https://deccancollege.ac.in/mechanical-engineering</a></td> </tr> <tr> <td>ECE</td> <td><a href="https://deccancollege.ac.in/electronics-and-communication-engineering/">https://deccancollege.ac.in/electronics-and-communication-engineering/</a></td> </tr> <tr> <td>CSE</td> <td><a href="https://deccancollege.ac.in/computer-science-engineering/">https://deccancollege.ac.in/computer-science-engineering/</a></td> </tr> <tr> <td>IT</td> <td><a href="https://deccancollege.ac.in/information-technology/">https://deccancollege.ac.in/information-technology/</a></td> </tr> <tr> <td>EEE</td> <td><a href="https://deccancollege.ac.in/electrical-and-electronics-engineering/">https://deccancollege.ac.in/electrical-and-electronics-engineering/</a></td> </tr> <tr> <td>CME</td> <td><a href="https://deccancollege.ac.in/department-of-computer-engineering/">https://deccancollege.ac.in/department-of-computer-engineering/</a></td> </tr> <tr> <td>ETE</td> <td><a href="https://deccancollege.ac.in/electronics-and-telecommunication-engineering/">https://deccancollege.ac.in/electronics-and-telecommunication-engineering/</a></td> </tr> <tr> <td>H&amp;S</td> <td><a href="https://deccancollege.ac.in/science-and-humanities/">https://deccancollege.ac.in/science-and-humanities/</a></td> </tr> <tr> <td>PG-MCA</td> <td><a href="https://deccancollege.ac.in/mca/">https://deccancollege.ac.in/mca/</a></td> </tr> <tr> <td>PG –MBA/ MBA(HM)</td> <td><a href="http://www.deccan.ac.in">http://www.deccan.ac.in</a></td> </tr> </tbody> </table>	Programme/Course	Web link	<b>UG/PG –Engineering</b>		Civil Engineering	<a href="https://deccancollege.ac.in/civil-engineering/">https://deccancollege.ac.in/civil-engineering/</a>	Mech. Engineering	<a href="https://deccancollege.ac.in/mechanical-engineering">https://deccancollege.ac.in/mechanical-engineering</a>	ECE	<a href="https://deccancollege.ac.in/electronics-and-communication-engineering/">https://deccancollege.ac.in/electronics-and-communication-engineering/</a>	CSE	<a href="https://deccancollege.ac.in/computer-science-engineering/">https://deccancollege.ac.in/computer-science-engineering/</a>	IT	<a href="https://deccancollege.ac.in/information-technology/">https://deccancollege.ac.in/information-technology/</a>	EEE	<a href="https://deccancollege.ac.in/electrical-and-electronics-engineering/">https://deccancollege.ac.in/electrical-and-electronics-engineering/</a>	CME	<a href="https://deccancollege.ac.in/department-of-computer-engineering/">https://deccancollege.ac.in/department-of-computer-engineering/</a>	ETE	<a href="https://deccancollege.ac.in/electronics-and-telecommunication-engineering/">https://deccancollege.ac.in/electronics-and-telecommunication-engineering/</a>	H&S	<a href="https://deccancollege.ac.in/science-and-humanities/">https://deccancollege.ac.in/science-and-humanities/</a>	PG-MCA	<a href="https://deccancollege.ac.in/mca/">https://deccancollege.ac.in/mca/</a>	PG –MBA/ MBA(HM)	<a href="http://www.deccan.ac.in">http://www.deccan.ac.in</a>
		Programme/Course	Web link																									
		<b>UG/PG –Engineering</b>																										
		Civil Engineering	<a href="https://deccancollege.ac.in/civil-engineering/">https://deccancollege.ac.in/civil-engineering/</a>																									
		Mech. Engineering	<a href="https://deccancollege.ac.in/mechanical-engineering">https://deccancollege.ac.in/mechanical-engineering</a>																									
		ECE	<a href="https://deccancollege.ac.in/electronics-and-communication-engineering/">https://deccancollege.ac.in/electronics-and-communication-engineering/</a>																									
		CSE	<a href="https://deccancollege.ac.in/computer-science-engineering/">https://deccancollege.ac.in/computer-science-engineering/</a>																									
		IT	<a href="https://deccancollege.ac.in/information-technology/">https://deccancollege.ac.in/information-technology/</a>																									
		EEE	<a href="https://deccancollege.ac.in/electrical-and-electronics-engineering/">https://deccancollege.ac.in/electrical-and-electronics-engineering/</a>																									
		CME	<a href="https://deccancollege.ac.in/department-of-computer-engineering/">https://deccancollege.ac.in/department-of-computer-engineering/</a>																									
		ETE	<a href="https://deccancollege.ac.in/electronics-and-telecommunication-engineering/">https://deccancollege.ac.in/electronics-and-telecommunication-engineering/</a>																									
		H&S	<a href="https://deccancollege.ac.in/science-and-humanities/">https://deccancollege.ac.in/science-and-humanities/</a>																									
		PG-MCA	<a href="https://deccancollege.ac.in/mca/">https://deccancollege.ac.in/mca/</a>																									
		PG –MBA/ MBA(HM)	<a href="http://www.deccan.ac.in">http://www.deccan.ac.in</a>																									
8	Profile of the Principal /Director	<p>Prof. Mir Iqbal Faheem, Ph.D  Director  DECCAN GROUP OF INSTITUTIONS  (A Self Financed Muslim Minority Technical Campus, Estd. by Dar-us-Salam Educational Trust)  (Affiliated to Osmania University, Hyderabad &amp; Approved by AICTE, New Delhi)  Darussalam, Aghapura, Hdyerabad – 500 001 Telangana, India  Mobile: 9704731117  Email: <a href="mailto:dcet@deccancollege.ac.in">dcet@deccancollege.ac.in</a>  URL: <a href="http://dgi.org.in/">http://dgi.org.in/</a>  Work Experience: 36 Years (Teaching/Research/Academic Administration)</p>																										
		<table border="1"> <thead> <tr> <th>Programme/Course</th> <th>Web link</th> </tr> </thead> <tbody> <tr> <td colspan="2"><b>UG/PG –Engineering</b></td> </tr> <tr> <td>Civil Engineering</td> <td><a href="https://deccancollege.ac.in/civil-engineering/">https://deccancollege.ac.in/civil-engineering/</a></td> </tr> <tr> <td>Mech Engineering</td> <td><a href="https://deccancollege.ac.in/mechanical-engineering">https://deccancollege.ac.in/mechanical-engineering</a></td> </tr> <tr> <td>ECE</td> <td><a href="https://deccancollege.ac.in/electronics-and-communication-engineering/">https://deccancollege.ac.in/electronics-and-communication-engineering/</a></td> </tr> <tr> <td>CSE</td> <td><a href="https://deccancollege.ac.in/computer-science-engineering/">https://deccancollege.ac.in/computer-science-engineering/</a></td> </tr> <tr> <td>IT</td> <td><a href="https://deccancollege.ac.in/information-technology/">https://deccancollege.ac.in/information-technology/</a></td> </tr> <tr> <td>EEE</td> <td><a href="https://deccancollege.ac.in/electrical-and-electronics-engineering/">https://deccancollege.ac.in/electrical-and-electronics-engineering/</a></td> </tr> <tr> <td>CME</td> <td><a href="https://deccancollege.ac.in/department-of-computer-engineering/">https://deccancollege.ac.in/department-of-computer-engineering/</a></td> </tr> <tr> <td>ETE</td> <td><a href="https://deccancollege.ac.in/electronics-and-telecommunication-engineering/">https://deccancollege.ac.in/electronics-and-telecommunication-engineering/</a></td> </tr> <tr> <td>H&amp;S</td> <td><a href="https://deccancollege.ac.in/science-and-humanities/">https://deccancollege.ac.in/science-and-humanities/</a></td> </tr> <tr> <td>PG-MCA</td> <td><a href="https://deccancollege.ac.in/mca/">https://deccancollege.ac.in/mca/</a></td> </tr> <tr> <td>PG –MBA/ MBA(HM)</td> <td><a href="http://www.deccan.ac.in">http://www.deccan.ac.in</a></td> </tr> </tbody> </table>	Programme/Course	Web link	<b>UG/PG –Engineering</b>		Civil Engineering	<a href="https://deccancollege.ac.in/civil-engineering/">https://deccancollege.ac.in/civil-engineering/</a>	Mech Engineering	<a href="https://deccancollege.ac.in/mechanical-engineering">https://deccancollege.ac.in/mechanical-engineering</a>	ECE	<a href="https://deccancollege.ac.in/electronics-and-communication-engineering/">https://deccancollege.ac.in/electronics-and-communication-engineering/</a>	CSE	<a href="https://deccancollege.ac.in/computer-science-engineering/">https://deccancollege.ac.in/computer-science-engineering/</a>	IT	<a href="https://deccancollege.ac.in/information-technology/">https://deccancollege.ac.in/information-technology/</a>	EEE	<a href="https://deccancollege.ac.in/electrical-and-electronics-engineering/">https://deccancollege.ac.in/electrical-and-electronics-engineering/</a>	CME	<a href="https://deccancollege.ac.in/department-of-computer-engineering/">https://deccancollege.ac.in/department-of-computer-engineering/</a>	ETE	<a href="https://deccancollege.ac.in/electronics-and-telecommunication-engineering/">https://deccancollege.ac.in/electronics-and-telecommunication-engineering/</a>	H&S	<a href="https://deccancollege.ac.in/science-and-humanities/">https://deccancollege.ac.in/science-and-humanities/</a>	PG-MCA	<a href="https://deccancollege.ac.in/mca/">https://deccancollege.ac.in/mca/</a>	PG –MBA/ MBA(HM)	<a href="http://www.deccan.ac.in">http://www.deccan.ac.in</a>
	Programme/Course	Web link																										
	<b>UG/PG –Engineering</b>																											
	Civil Engineering	<a href="https://deccancollege.ac.in/civil-engineering/">https://deccancollege.ac.in/civil-engineering/</a>																										
	Mech Engineering	<a href="https://deccancollege.ac.in/mechanical-engineering">https://deccancollege.ac.in/mechanical-engineering</a>																										
	ECE	<a href="https://deccancollege.ac.in/electronics-and-communication-engineering/">https://deccancollege.ac.in/electronics-and-communication-engineering/</a>																										
	CSE	<a href="https://deccancollege.ac.in/computer-science-engineering/">https://deccancollege.ac.in/computer-science-engineering/</a>																										
	IT	<a href="https://deccancollege.ac.in/information-technology/">https://deccancollege.ac.in/information-technology/</a>																										
	EEE	<a href="https://deccancollege.ac.in/electrical-and-electronics-engineering/">https://deccancollege.ac.in/electrical-and-electronics-engineering/</a>																										
	CME	<a href="https://deccancollege.ac.in/department-of-computer-engineering/">https://deccancollege.ac.in/department-of-computer-engineering/</a>																										
	ETE	<a href="https://deccancollege.ac.in/electronics-and-telecommunication-engineering/">https://deccancollege.ac.in/electronics-and-telecommunication-engineering/</a>																										
	H&S	<a href="https://deccancollege.ac.in/science-and-humanities/">https://deccancollege.ac.in/science-and-humanities/</a>																										
	PG-MCA	<a href="https://deccancollege.ac.in/mca/">https://deccancollege.ac.in/mca/</a>																										
PG –MBA/ MBA(HM)	<a href="http://www.deccan.ac.in">http://www.deccan.ac.in</a>																											
9	Fee Details	<table border="1"> <thead> <tr> <th>Programme</th> <th>Fee fixed by TAFRC for the block period (2025-2028)</th> </tr> </thead> <tbody> <tr> <td>UG–Engineering</td> <td>Rs. 76,000 per annum</td> </tr> <tr> <td>PG –Engineering</td> <td>Rs. 1,10,000 per annum</td> </tr> <tr> <td>PG –MCA</td> <td>Rs. 45,000 per annum</td> </tr> <tr> <td>PG –MBA/ MBA(HM)</td> <td>MBA : Rs. 52,000 / MBA(HM): Rs. 60,000</td> </tr> </tbody> </table>	Programme	Fee fixed by TAFRC for the block period (2025-2028)	UG–Engineering	Rs. 76,000 per annum	PG –Engineering	Rs. 1,10,000 per annum	PG –MCA	Rs. 45,000 per annum	PG –MBA/ MBA(HM)	MBA : Rs. 52,000 / MBA(HM): Rs. 60,000																
		Programme	Fee fixed by TAFRC for the block period (2025-2028)																									
		UG–Engineering	Rs. 76,000 per annum																									
		PG –Engineering	Rs. 1,10,000 per annum																									
		PG –MCA	Rs. 45,000 per annum																									
PG –MBA/ MBA(HM)	MBA : Rs. 52,000 / MBA(HM): Rs. 60,000																											

10	Admission	<table border="1"> <thead> <tr> <th rowspan="3">Programme/Course</th> <th colspan="8">Year wise Sanctioned Intake/Admitted</th> </tr> <tr> <th colspan="2">CAY (2025-2026)</th> <th colspan="2">CAY<sub>1</sub> (2024-2025)</th> <th colspan="2">CAY<sub>2</sub> (2023-2024)</th> <th colspan="2">CAY<sub>3</sub> (2022-2023)</th> </tr> <tr> <th>S</th> <th>A</th> <th>S</th> <th>A</th> <th>S</th> <th>A</th> <th>S</th> <th>A</th> </tr> </thead> <tbody> <tr> <td colspan="9"><b>UG-Engineering</b></td> </tr> <tr> <td>Civil Engineering</td> <td>60</td> <td>38</td> <td>60</td> <td>42</td> <td>60</td> <td>20</td> <td>120</td> <td>26</td> </tr> <tr> <td>Mechanical Engineering</td> <td>60</td> <td>31</td> <td>60</td> <td>23</td> <td>60</td> <td>19</td> <td>120</td> <td>14</td> </tr> <tr> <td>ECE</td> <td>30</td> <td>17</td> <td>30</td> <td>26</td> <td>30</td> <td>22</td> <td>90</td> <td>47</td> </tr> <tr> <td>CSE</td> <td>300</td> <td>272</td> <td>300</td> <td>283</td> <td>180</td> <td>180</td> <td>90</td> <td>90</td> </tr> <tr> <td>IT</td> <td>60</td> <td>50</td> <td>60</td> <td>50</td> <td>60</td> <td>60</td> <td>60</td> <td>60</td> </tr> <tr> <td>EEE</td> <td>30</td> <td>12</td> <td>30</td> <td>18</td> <td>60</td> <td>7</td> <td>60</td> <td>06</td> </tr> <tr> <td>CME</td> <td>60</td> <td>35</td> <td>60</td> <td>41</td> <td>-</td> <td>-</td> <td>-</td> <td>-</td> </tr> <tr> <td>ETE</td> <td>30</td> <td>01</td> <td>30</td> <td>03</td> <td>30</td> <td>1</td> <td>-</td> <td>-</td> </tr> <tr> <td colspan="9"><b>PG-Engineering</b></td> </tr> <tr> <td>ME-Structural Engineering</td> <td>18</td> <td>15</td> <td>18</td> <td>16</td> <td>18</td> <td>15</td> <td>18</td> <td>16</td> </tr> <tr> <td>M.Tech-CSE</td> <td>18</td> <td>15</td> <td>18</td> <td>17</td> <td>18</td> <td>12</td> <td>18</td> <td>12</td> </tr> <tr> <td>MCA</td> <td>60</td> <td>59</td> <td>60</td> <td>58</td> <td>60</td> <td>60</td> <td>60</td> <td>60</td> </tr> <tr> <td>MBA</td> <td>240</td> <td>170</td> <td>240</td> <td>180</td> <td>240</td> <td>180</td> <td>240</td> <td>172</td> </tr> <tr> <td>MBA(HM)</td> <td>60</td> <td>59</td> <td>60</td> <td>60</td> <td>60</td> <td>60</td> <td>60</td> <td>60</td> </tr> <tr> <td><b>Total</b></td> <td>1026</td> <td><b>774</b></td> <td>1026</td> <td><b>817</b></td> <td>876</td> <td><b>636</b></td> <td>936</td> <td><b>563</b></td> </tr> </tbody> </table>	Programme/Course	Year wise Sanctioned Intake/Admitted								CAY (2025-2026)		CAY <sub>1</sub> (2024-2025)		CAY <sub>2</sub> (2023-2024)		CAY <sub>3</sub> (2022-2023)		S	A	S	A	S	A	S	A	<b>UG-Engineering</b>									Civil Engineering	60	38	60	42	60	20	120	26	Mechanical Engineering	60	31	60	23	60	19	120	14	ECE	30	17	30	26	30	22	90	47	CSE	300	272	300	283	180	180	90	90	IT	60	50	60	50	60	60	60	60	EEE	30	12	30	18	60	7	60	06	CME	60	35	60	41	-	-	-	-	ETE	30	01	30	03	30	1	-	-	<b>PG-Engineering</b>									ME-Structural Engineering	18	15	18	16	18	15	18	16	M.Tech-CSE	18	15	18	17	18	12	18	12	MCA	60	59	60	58	60	60	60	60	MBA	240	170	240	180	240	180	240	172	MBA(HM)	60	59	60	60	60	60	60	60	<b>Total</b>	1026	<b>774</b>	1026	<b>817</b>	876	<b>636</b>	936	<b>563</b>
		Programme/Course		Year wise Sanctioned Intake/Admitted																																																																																																																																																																							
				CAY (2025-2026)		CAY <sub>1</sub> (2024-2025)		CAY <sub>2</sub> (2023-2024)		CAY <sub>3</sub> (2022-2023)																																																																																																																																																																	
			S	A	S	A	S	A	S	A																																																																																																																																																																	
		<b>UG-Engineering</b>																																																																																																																																																																									
		Civil Engineering	60	38	60	42	60	20	120	26																																																																																																																																																																	
		Mechanical Engineering	60	31	60	23	60	19	120	14																																																																																																																																																																	
		ECE	30	17	30	26	30	22	90	47																																																																																																																																																																	
		CSE	300	272	300	283	180	180	90	90																																																																																																																																																																	
		IT	60	50	60	50	60	60	60	60																																																																																																																																																																	
		EEE	30	12	30	18	60	7	60	06																																																																																																																																																																	
		CME	60	35	60	41	-	-	-	-																																																																																																																																																																	
		ETE	30	01	30	03	30	1	-	-																																																																																																																																																																	
		<b>PG-Engineering</b>																																																																																																																																																																									
		ME-Structural Engineering	18	15	18	16	18	15	18	16																																																																																																																																																																	
		M.Tech-CSE	18	15	18	17	18	12	18	12																																																																																																																																																																	
		MCA	60	59	60	58	60	60	60	60																																																																																																																																																																	
MBA	240	170	240	180	240	180	240	172																																																																																																																																																																			
MBA(HM)	60	59	60	60	60	60	60	60																																																																																																																																																																			
<b>Total</b>	1026	<b>774</b>	1026	<b>817</b>	876	<b>636</b>	936	<b>563</b>																																																																																																																																																																			
		Legend: S (Sanctioned Intake) A (Admitted)																																																																																																																																																																									
11	Admission Procedure	<table border="1"> <thead> <tr> <th rowspan="2">Programme</th> <th colspan="2">Seat Matrix (% on approved intake)</th> <th>Test Agency</th> <th rowspan="2">URL</th> </tr> <tr> <th>State CET</th> <th>Mgmt.</th> <th>CET-Convener</th> </tr> </thead> <tbody> <tr> <td>UG-Engineering</td> <td>70%</td> <td>30%</td> <td>TSEAMCET</td> <td><a href="http://www.tseamcet.nic.in">www.tseamcet.nic.in</a></td> </tr> <tr> <td>PG -Engineering</td> <td>70%</td> <td>30%</td> <td>TSPGECET</td> <td><a href="http://www.pgecet.tsche.ac.in">www.pgecet.tsche.ac.in</a></td> </tr> <tr> <td>PG -MCA</td> <td>70%</td> <td>30%</td> <td>TSICET</td> <td><a href="http://www.tsicet.nic.in">www.tsicet.nic.in</a></td> </tr> <tr> <td>PG -MBA/ MBA(HM)</td> <td>70%</td> <td>30%</td> <td>TSICET</td> <td><a href="http://www.icet.tsche.ac.in">www.icet.tsche.ac.in</a>, <a href="http://www.osmania.ac.in">www.osmania.ac.in</a></td> </tr> </tbody> </table>	Programme	Seat Matrix (% on approved intake)		Test Agency	URL	State CET	Mgmt.	CET-Convener	UG-Engineering	70%	30%	TSEAMCET	<a href="http://www.tseamcet.nic.in">www.tseamcet.nic.in</a>	PG -Engineering	70%	30%	TSPGECET	<a href="http://www.pgecet.tsche.ac.in">www.pgecet.tsche.ac.in</a>	PG -MCA	70%	30%	TSICET	<a href="http://www.tsicet.nic.in">www.tsicet.nic.in</a>	PG -MBA/ MBA(HM)	70%	30%	TSICET	<a href="http://www.icet.tsche.ac.in">www.icet.tsche.ac.in</a> , <a href="http://www.osmania.ac.in">www.osmania.ac.in</a>																																																																																																																																													
		Programme		Seat Matrix (% on approved intake)		Test Agency		URL																																																																																																																																																																			
			State CET	Mgmt.	CET-Convener																																																																																																																																																																						
		UG-Engineering	70%	30%	TSEAMCET	<a href="http://www.tseamcet.nic.in">www.tseamcet.nic.in</a>																																																																																																																																																																					
		PG -Engineering	70%	30%	TSPGECET	<a href="http://www.pgecet.tsche.ac.in">www.pgecet.tsche.ac.in</a>																																																																																																																																																																					
PG -MCA	70%	30%	TSICET	<a href="http://www.tsicet.nic.in">www.tsicet.nic.in</a>																																																																																																																																																																							
PG -MBA/ MBA(HM)	70%	30%	TSICET	<a href="http://www.icet.tsche.ac.in">www.icet.tsche.ac.in</a> , <a href="http://www.osmania.ac.in">www.osmania.ac.in</a>																																																																																																																																																																							
Calendar for admission against Convener seats and allotment as per the respective Convener(s) of the programme, Govt. of Telangana																																																																																																																																																																											
Calendar for admission against Management/vacant seats as provided by TSCHE, Govt. of Telangana																																																																																																																																																																											
12	Criteria and Weightage for Admission	CET-Conveners/TSCHE, Govt. of Telangana																																																																																																																																																																									
13	List of Applicants	As per the admission guidelines and admission schedule provided by TSCHE, Govt. of Telangana																																																																																																																																																																									
14	Results of Admission Under Management seats/Vacant seats	As per the admission guidelines and admission schedule provided by TSCHE, Govt. of Telangana																																																																																																																																																																									

15	Information of Infrastructure and Other Resources Available	<b>Infrastructure</b>																																															
		<table border="1"> <thead> <tr> <th rowspan="2">Programme</th> <th colspan="5">No. of Rooms</th> </tr> <tr> <th>Class</th> <th>Tutorial</th> <th>Lab</th> <th>Computer Center</th> <th>Central Exam</th> </tr> </thead> <tbody> <tr> <td>UG–Engineering</td> <td>48</td> <td rowspan="2">09</td> <td rowspan="2">61</td> <td>1</td> <td>1</td> </tr> <tr> <td>PG –Engineering</td> <td>4</td> <td>-</td> <td>1</td> </tr> <tr> <td>PG –MCA</td> <td>2</td> <td>1</td> <td>2</td> <td>-</td> <td>1</td> </tr> <tr> <td>PG –MBA/ MBA(HM)</td> <td>10</td> <td>3</td> <td>1</td> <td>1</td> <td>1</td> </tr> <tr> <td>Min-Unit Area (m<sup>2</sup>)</td> <td>80 m<sup>2</sup></td> <td>60 m<sup>2</sup></td> <td>150 m<sup>2</sup></td> <td>330 m<sup>2</sup></td> <td>360 m<sup>2</sup></td> </tr> </tbody> </table> <p>Barrier Free Built Environment for disabled and elderly persons: <b>Available</b>  Occupancy Certificate: <b>Available</b>  Fire and Safety Certificate: <b>Available</b>  Hostel Facilities: <b>Available</b></p>	Programme	No. of Rooms					Class	Tutorial	Lab	Computer Center	Central Exam	UG–Engineering	48	09	61	1	1	PG –Engineering	4	-	1	PG –MCA	2	1	2	-	1	PG –MBA/ MBA(HM)	10	3	1	1	1	Min-Unit Area (m <sup>2</sup> )	80 m <sup>2</sup>	60 m <sup>2</sup>	150 m <sup>2</sup>	330 m <sup>2</sup>	360 m <sup>2</sup>								
Programme	No. of Rooms																																																
	Class	Tutorial	Lab	Computer Center	Central Exam																																												
UG–Engineering	48	09	61	1	1																																												
PG –Engineering	4			-	1																																												
PG –MCA	2	1	2	-	1																																												
PG –MBA/ MBA(HM)	10	3	1	1	1																																												
Min-Unit Area (m <sup>2</sup> )	80 m <sup>2</sup>	60 m <sup>2</sup>	150 m <sup>2</sup>	330 m <sup>2</sup>	360 m <sup>2</sup>																																												
		<b>Library</b>																																															
		<table border="1"> <thead> <tr> <th>Programme / Course</th> <th>Titles</th> <th>Volumes</th> <th>Journals</th> <th>Online National/ International Journals subscribed</th> </tr> </thead> <tbody> <tr> <td colspan="5"><b>UG/PG –Engineering</b></td> </tr> <tr> <td>Civil Engineering</td> <td>1517</td> <td>7997</td> <td>09</td> <td rowspan="8">Adequate prescribed number of National and International Journals are subscribed to cater the need for academic and research purpose for all the Programme/Courses</td> </tr> <tr> <td>Mech.</td> <td>1726</td> <td>8145</td> <td>04</td> </tr> <tr> <td>ECE/ETE</td> <td>2086</td> <td>7118</td> <td>09</td> </tr> <tr> <td>CSE/CME</td> <td>1426</td> <td>6157</td> <td>27</td> </tr> <tr> <td>IT</td> <td>931</td> <td>4652</td> <td>06</td> </tr> <tr> <td>EEE</td> <td>1489</td> <td>6335</td> <td>03</td> </tr> <tr> <td>SHM</td> <td>2896</td> <td>10480</td> <td>06</td> </tr> <tr> <td>PG-MCA</td> <td>768</td> <td>4804</td> <td>06</td> </tr> <tr> <td>PG –MBA / MBA(HM)</td> <td>5408</td> <td>10766</td> <td>41</td> </tr> </tbody> </table>	Programme / Course	Titles	Volumes	Journals	Online National/ International Journals subscribed	<b>UG/PG –Engineering</b>					Civil Engineering	1517	7997	09	Adequate prescribed number of National and International Journals are subscribed to cater the need for academic and research purpose for all the Programme/Courses	Mech.	1726	8145	04	ECE/ETE	2086	7118	09	CSE/CME	1426	6157	27	IT	931	4652	06	EEE	1489	6335	03	SHM	2896	10480	06	PG-MCA	768	4804	06	PG –MBA / MBA(HM)	5408	10766	41
Programme / Course	Titles	Volumes	Journals	Online National/ International Journals subscribed																																													
<b>UG/PG –Engineering</b>																																																	
Civil Engineering	1517	7997	09	Adequate prescribed number of National and International Journals are subscribed to cater the need for academic and research purpose for all the Programme/Courses																																													
Mech.	1726	8145	04																																														
ECE/ETE	2086	7118	09																																														
CSE/CME	1426	6157	27																																														
IT	931	4652	06																																														
EEE	1489	6335	03																																														
SHM	2896	10480	06																																														
PG-MCA	768	4804	06																																														
PG –MBA / MBA(HM)	5408	10766	41																																														
		<b>Laboratory and Workshop</b>																																															
		<table border="1"> <thead> <tr> <th>Programme/Course</th> <th>Major Equipment</th> </tr> </thead> <tbody> <tr> <td colspan="2"><b>UG/PG –Engineering</b></td> </tr> <tr> <td>Civil</td> <td>CTM,UTM,TL,STN,MAR,STAB,SHEAR,STADD,AUTOCAD</td> </tr> <tr> <td>Mech</td> <td>ICENG, PUMPTUR,HTCOM,LATHE,FITTINGS,TIN SMITHY</td> </tr> <tr> <td>ECE</td> <td>CRO,FUNCGEN,UP UC KITS,UWBENCHES</td> </tr> <tr> <td>CSE</td> <td>IBMXSERIES 226 SERVERS, HP SCANNER, LASER PRINTER,CPLD,VS,RIDE,UMPS,XLINX,MSDN,OS WIN32, ALNG</td> </tr> <tr> <td>IT</td> <td>I3, I5, MC&amp;INT KITS, KRYKARDS,UPS,SCOPENSERVER,REDHAT LINUX, RATROSE,ORACLE</td> </tr> <tr> <td>EEE</td> <td>RECTIFIER UNIT, OSCILLISCOPIES, DECADE RESISTANCE BONES, RELAY TEST KIT TOOL BOX, SIMULINK CONTROL SY</td> </tr> <tr> <td>EIE</td> <td>FCT,MCP,PCTRAIN,CVC,PCT,PLC</td> </tr> <tr> <td>Prod</td> <td>MIA,MOUL,ARCWEL,CNCLAT,DIES,MOULD</td> </tr> <tr> <td>SHM</td> <td>ELCT,TLB,DEMIM PLANT,SPECTROPHOTOMETERS,OCSILLOSC,P MTERS, DTTQ,NRAM,UPS</td> </tr> <tr> <td>PG-MCA</td> <td>SER,COMP,PRINT,STAB,UPS,AIRCOND</td> </tr> <tr> <td>PG –MBA/ MBA(HM)</td> <td>Computers, Printers, Scanner, LCDs</td> </tr> </tbody> </table> <p>List of Experimental Setup in each Laboratory/ Workshop:  As per Osmania University approved scheme and syllabus URL: <a href="http://www.uceou.edu/DeanFE.html">http://www.uceou.edu/DeanFE.html</a></p>	Programme/Course	Major Equipment	<b>UG/PG –Engineering</b>		Civil	CTM,UTM,TL,STN,MAR,STAB,SHEAR,STADD,AUTOCAD	Mech	ICENG, PUMPTUR,HTCOM,LATHE,FITTINGS,TIN SMITHY	ECE	CRO,FUNCGEN,UP UC KITS,UWBENCHES	CSE	IBMXSERIES 226 SERVERS, HP SCANNER, LASER PRINTER,CPLD,VS,RIDE,UMPS,XLINX,MSDN,OS WIN32, ALNG	IT	I3, I5, MC&INT KITS, KRYKARDS,UPS,SCOPENSERVER,REDHAT LINUX, RATROSE,ORACLE	EEE	RECTIFIER UNIT, OSCILLISCOPIES, DECADE RESISTANCE BONES, RELAY TEST KIT TOOL BOX, SIMULINK CONTROL SY	EIE	FCT,MCP,PCTRAIN,CVC,PCT,PLC	Prod	MIA,MOUL,ARCWEL,CNCLAT,DIES,MOULD	SHM	ELCT,TLB,DEMIM PLANT,SPECTROPHOTOMETERS,OCSILLOSC,P MTERS, DTTQ,NRAM,UPS	PG-MCA	SER,COMP,PRINT,STAB,UPS,AIRCOND	PG –MBA/ MBA(HM)	Computers, Printers, Scanner, LCDs																					
Programme/Course	Major Equipment																																																
<b>UG/PG –Engineering</b>																																																	
Civil	CTM,UTM,TL,STN,MAR,STAB,SHEAR,STADD,AUTOCAD																																																
Mech	ICENG, PUMPTUR,HTCOM,LATHE,FITTINGS,TIN SMITHY																																																
ECE	CRO,FUNCGEN,UP UC KITS,UWBENCHES																																																
CSE	IBMXSERIES 226 SERVERS, HP SCANNER, LASER PRINTER,CPLD,VS,RIDE,UMPS,XLINX,MSDN,OS WIN32, ALNG																																																
IT	I3, I5, MC&INT KITS, KRYKARDS,UPS,SCOPENSERVER,REDHAT LINUX, RATROSE,ORACLE																																																
EEE	RECTIFIER UNIT, OSCILLISCOPIES, DECADE RESISTANCE BONES, RELAY TEST KIT TOOL BOX, SIMULINK CONTROL SY																																																
EIE	FCT,MCP,PCTRAIN,CVC,PCT,PLC																																																
Prod	MIA,MOUL,ARCWEL,CNCLAT,DIES,MOULD																																																
SHM	ELCT,TLB,DEMIM PLANT,SPECTROPHOTOMETERS,OCSILLOSC,P MTERS, DTTQ,NRAM,UPS																																																
PG-MCA	SER,COMP,PRINT,STAB,UPS,AIRCOND																																																
PG –MBA/ MBA(HM)	Computers, Printers, Scanner, LCDs																																																

**Computing Facilities**

Programme	Internet Bandwidth	Number and configuration of System	Number of system connected by LAN/WAN	Major software packages
UG/PG–Engineering PG –MCA PG –MBA/MBA(HM)	500 Mbps ACT fiber net and 100 Mbps leased line by SoL + 40 Mbps Wi-Fi,	528	528	Auto-CAD-2010 Auto-CAD LDDT Rel 2i Auto-CAD Map-2008 STADD – Pro 2001 3-D Studio Viz Rel 3i NASTRAN MATLab I CAP/4 Windows 8.71 (P SPICE) Active HDL 4.1Mat Lab 5.1 Mat Lab 7.12 Xilinx HDL Cadence, Mentor Graphics MATLAB CONTROL SYSTEM TOOL BOX DIGITAL SIGNAL TOOL BOX Ansys 15 Solid Works PTC Creo 2.0 Iron CAD 2012 CATIA V 5 R11 Auto CAD 2000 Gibbs CAM CNC offline milling CNC Turning CNC Train Mill & Turn Work space Simulation Iron CAD 3.2 Ansys 5.7 Solid Works Education Version Microsoft VISIO, etc

Innovation Cell: **Available**

**List of facilities available**

Games and Sports Facilities: **Available**

Extra-Curricular Activities: **Available**

Soft Skill Development Facilities: **Available**

**Teaching Learning Process**

Curricula and syllabus for each of the Programmes as approved by the University

Academic Calendar of the University:

Available on the below website

URL: <http://www.uceou.edu/DeanFE.html>

Academic Time Table with the name of the Faculty members handling the Course

Teaching Load of each Faculty: Available in the respective Departments/Programmes

Internal Continuous Evaluation System and place

Student's assessment of Faculty, System in place:

Available in the respective Departments/Programmes on the following websites

URL: <http://deccancollege.ac.in/>

URL: <https://deccan.ac.in/>

		For each Post Graduate Courses give the following: Title of the Course Curricula and Syllabi Available on the below website URL: <a href="http://www.uceou.edu/DeanFE.html">http://www.uceou.edu/DeanFE.html</a> Laboratory facilities exclusive to the Post Graduate Course Available in the respective Departments/Programmes on the following websites URL: <a href="http://deccancollege.ac.in/">http://deccancollege.ac.in/</a> URL: <a href="http://www.deccan.ac.in/">http://www.deccan.ac.in/</a>																																																																																									
16	Enrollment of students in the last 3 years	<table border="1"> <thead> <tr> <th rowspan="2">Programme/Course</th> <th colspan="4">Enrollment in last three years</th> </tr> <tr> <th>CAY (2025-2026)</th> <th>CAY<sub>1</sub> (2024-2025)</th> <th>CAY<sub>2</sub> (2023-2024)</th> <th>CAY<sub>3</sub> (2022-2023)</th> </tr> </thead> <tbody> <tr> <td colspan="5"><b>UG-Engineering</b></td> </tr> <tr> <td>Civil Engineering</td> <td>38</td> <td>42</td> <td>20</td> <td>26</td> </tr> <tr> <td>Mechanical Engineering</td> <td>31</td> <td>23</td> <td>19</td> <td>14</td> </tr> <tr> <td>ECE</td> <td>17</td> <td>26</td> <td>22</td> <td>47</td> </tr> <tr> <td>CSE</td> <td>272</td> <td>283</td> <td>180</td> <td>90</td> </tr> <tr> <td>IT</td> <td>50</td> <td>50</td> <td>60</td> <td>60</td> </tr> <tr> <td>EEE</td> <td>12</td> <td>18</td> <td>7</td> <td>06</td> </tr> <tr> <td>CME</td> <td>35</td> <td>41</td> <td>-</td> <td>-</td> </tr> <tr> <td>ETE</td> <td>01</td> <td>03</td> <td>1</td> <td>-</td> </tr> <tr> <td colspan="5"><b>PG-Engineering</b></td> </tr> <tr> <td>ME-Structural Engineering</td> <td>15</td> <td>16</td> <td>15</td> <td>16</td> </tr> <tr> <td>M.Tech-CSE</td> <td>15</td> <td>17</td> <td>12</td> <td>12</td> </tr> <tr> <td>PG-MCA</td> <td>59</td> <td>58</td> <td>60</td> <td>60</td> </tr> <tr> <td>PG-MBA</td> <td>170</td> <td>180</td> <td>180</td> <td>172</td> </tr> <tr> <td>PG-MBA(HM)</td> <td>59</td> <td>60</td> <td>60</td> <td>60</td> </tr> <tr> <td><b>Total</b></td> <td><b>774</b></td> <td><b>817</b></td> <td><b>636</b></td> <td><b>563</b></td> </tr> </tbody> </table>	Programme/Course	Enrollment in last three years				CAY (2025-2026)	CAY <sub>1</sub> (2024-2025)	CAY <sub>2</sub> (2023-2024)	CAY <sub>3</sub> (2022-2023)	<b>UG-Engineering</b>					Civil Engineering	38	42	20	26	Mechanical Engineering	31	23	19	14	ECE	17	26	22	47	CSE	272	283	180	90	IT	50	50	60	60	EEE	12	18	7	06	CME	35	41	-	-	ETE	01	03	1	-	<b>PG-Engineering</b>					ME-Structural Engineering	15	16	15	16	M.Tech-CSE	15	17	12	12	PG-MCA	59	58	60	60	PG-MBA	170	180	180	172	PG-MBA(HM)	59	60	60	60	<b>Total</b>	<b>774</b>	<b>817</b>	<b>636</b>	<b>563</b>
Programme/Course	Enrollment in last three years																																																																																										
	CAY (2025-2026)	CAY <sub>1</sub> (2024-2025)	CAY <sub>2</sub> (2023-2024)	CAY <sub>3</sub> (2022-2023)																																																																																							
<b>UG-Engineering</b>																																																																																											
Civil Engineering	38	42	20	26																																																																																							
Mechanical Engineering	31	23	19	14																																																																																							
ECE	17	26	22	47																																																																																							
CSE	272	283	180	90																																																																																							
IT	50	50	60	60																																																																																							
EEE	12	18	7	06																																																																																							
CME	35	41	-	-																																																																																							
ETE	01	03	1	-																																																																																							
<b>PG-Engineering</b>																																																																																											
ME-Structural Engineering	15	16	15	16																																																																																							
M.Tech-CSE	15	17	12	12																																																																																							
PG-MCA	59	58	60	60																																																																																							
PG-MBA	170	180	180	172																																																																																							
PG-MBA(HM)	59	60	60	60																																																																																							
<b>Total</b>	<b>774</b>	<b>817</b>	<b>636</b>	<b>563</b>																																																																																							
17	List of Research Projects/ Consultancy Works	<table border="1"> <thead> <tr> <th rowspan="2">Programme/Course</th> <th colspan="4">Publications (if any) out of research in last three years out of masters projects</th> </tr> <tr> <th>CAY (2024-2025)</th> <th>CAY<sub>1</sub> (2023-2024)</th> <th>CAY<sub>2</sub> (2022-2023)</th> <th>CAY<sub>3</sub> (2021-2022)</th> </tr> </thead> <tbody> <tr> <td colspan="5"><b>PG-Engineering</b></td> </tr> <tr> <td>ME-Structural Engg.</td> <td>05</td> <td>04</td> <td>14</td> <td>03</td> </tr> <tr> <td>M.Tech-CSE</td> <td>10</td> <td>09</td> <td>11</td> <td>04</td> </tr> <tr> <td>PG-MCA</td> <td>56</td> <td>06</td> <td>15</td> <td>08</td> </tr> <tr> <td>PG-MBA</td> <td>19</td> <td>18</td> <td>16</td> <td>04</td> </tr> <tr> <td>PG-MBA(HM)</td> <td>05</td> <td>06</td> <td>05</td> <td>02</td> </tr> </tbody> </table> <p>Number of Projects carried out, funding agency, Grant received: NIL</p> <p>Industry Linkage:</p> <p>MoUs with Industries (minimum 3)</p>	Programme/Course	Publications (if any) out of research in last three years out of masters projects				CAY (2024-2025)	CAY <sub>1</sub> (2023-2024)	CAY <sub>2</sub> (2022-2023)	CAY <sub>3</sub> (2021-2022)	<b>PG-Engineering</b>					ME-Structural Engg.	05	04	14	03	M.Tech-CSE	10	09	11	04	PG-MCA	56	06	15	08	PG-MBA	19	18	16	04	PG-MBA(HM)	05	06	05	02																																																		
Programme/Course	Publications (if any) out of research in last three years out of masters projects																																																																																										
	CAY (2024-2025)	CAY <sub>1</sub> (2023-2024)	CAY <sub>2</sub> (2022-2023)	CAY <sub>3</sub> (2021-2022)																																																																																							
<b>PG-Engineering</b>																																																																																											
ME-Structural Engg.	05	04	14	03																																																																																							
M.Tech-CSE	10	09	11	04																																																																																							
PG-MCA	56	06	15	08																																																																																							
PG-MBA	19	18	16	04																																																																																							
PG-MBA(HM)	05	06	05	02																																																																																							
18	LoA and subsequent EoA till the current Academic Year	Available on the website URL: <a href="http://www.dgi.org.in">http://www.dgi.org.in</a>																																																																																									
19	Accounted audited statement for the last three years	Available on the website URL: <a href="http://www.dgi.org.in/">http://www.dgi.org.in/</a>																																																																																									

20	Best Practices adopted, if any	<p><b>Enrichment of Teaching and Learning Process</b></p> <ul style="list-style-type: none"> <li>• On-line Feedback from students and alumni for strengthening the teaching-learning system.</li> <li>• Improving Library with print and e-resources.</li> <li>• Intensive use of technology and ICT enabled teaching-learning methods like Moodle, MOOCS, SWAYAM, NPTEL, QEEE lectures, etc.</li> <li>• Wi-Fi enabled campus encourages additional learning by way of access to website containing e-learning resources.</li> <li>• Monitoring center for research for undergoing M.E. scholar's dissertation work</li> <li>• Transparency ensured in evaluating students' academic performance</li> <li>• 24x7 students' feedback about teachers' performance and follow-on action.</li> <li>• Introduced appraisal of teachers' performance by the students twice in an academic year</li> </ul> <p><b>Enrichment of Skill Sets of Student</b></p> <ul style="list-style-type: none"> <li>• Promoting the students for their involvement in co-curricular activities within and outside the campus by assigning additional credit under an able guidance of faculty</li> <li>• Industrial training and internship since second year of UG program</li> <li>• Conducting guest lectures, workshops and seminars to encourage higher education</li> <li>• Proctor system - each faculty member work as a proctor for a group of twenty students (five each from First year to final year B. E. program) for counseling and better performance of students.</li> <li>• Advanced learners are encouraged to come out with innovative ideas / take up short term projects and they are involved in mentoring activities.</li> <li>• Incubation center with the motive of encouraging the establishment of start-up companies in the immediate future</li> <li>• Career guidance cells, soft-skill development activities, grievance redressal cell helping students to excel in academics.</li> </ul> <p><b>Interaction with Outside World</b></p> <ul style="list-style-type: none"> <li>• Establishment of tie-ups with renowned industries and institutes</li> <li>• Motivation and support for students for appearing competitive exams and summer internship in industries, research Institute in India and abroad.</li> <li>• Creation of Centers of Excellence to promote research in diversified fields to emerge in National and International level.</li> <li>• Formation of Industry-Institute Partnership Cell to promote professional education and research.</li> <li>• Academic flexibility and participation of industries in teaching.</li> </ul> <p><b>Faculty Development and Welfare</b></p> <ul style="list-style-type: none"> <li>• MasterSoft ERP software implementation for management of Academic, attendance, Examinations, Payroll, Establishment, ITLE, Feedback, Library, etc.</li> <li>• Appropriate functioning of grievance Redressal mechanism</li> <li>• Implementation of CAS to promote faculty to higher post</li> <li>• Enhance teacher quality, all the faculty members to pursue Ph.D.</li> <li>• Encourage faculty members apply for research and development projects funded by DST, UGC, CSIR, AICTE, DRDO, etc.</li> <li>• FDP courses for the benefit of faculty members.</li> <li>• Faculty members organizing / attending short term courses in emerging areas.</li> <li>• Encourage all faculties in research, consultancy and extension in new and emerging areas thereby revenue generation.</li> </ul>
----	--------------------------------	--